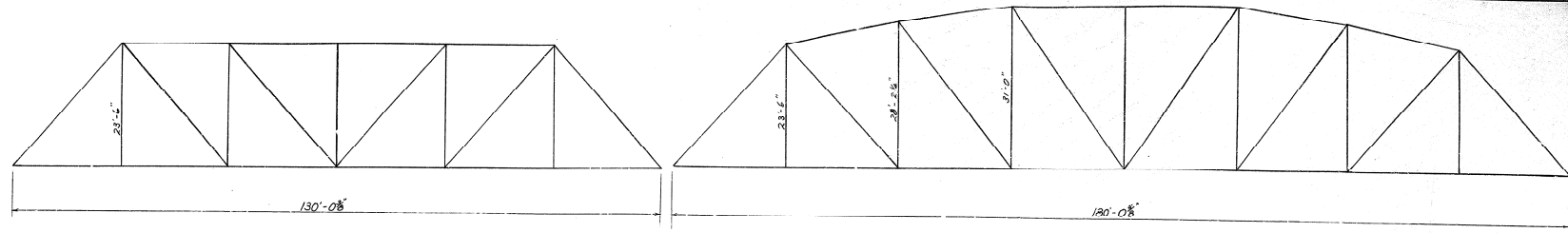


FILE NO.	STATE	FILE NO.	FILE NO.	FILE NO.	FILE NO.
7	KY.				



ESTIMATED QUANTITIES
 Steel 393,000Lbs.

DESIGNED BY	DATE
CHECKED BY	DATE
APPROVED BY	DATE
REVISIONS	

*Touch up by state forces
 P.C.M./jm
 8/16 18 1964*

Red River Bridge

RECOMMENDED FOR APPROVAL BRIDGE ENGINEER	COMMONWEALTH OF KENTUCKY DEPARTMENT OF HIGHWAYS FRANKFORT COUNTY OF CLARK - ESTILL WINCHESTER - IRVINE ROAD STATION PROJECT NO. BRIDGE NUMBER 25-62-8 DRAWING NO. 9107
APPROVED STATE HIGHWAY ENGINEER	
APPROVED COMMISSIONER OF HIGHWAYS	